

PART OF THE S.E. 1/4, SEC. 30, T.6N., R.1W., S.L.B. & M.

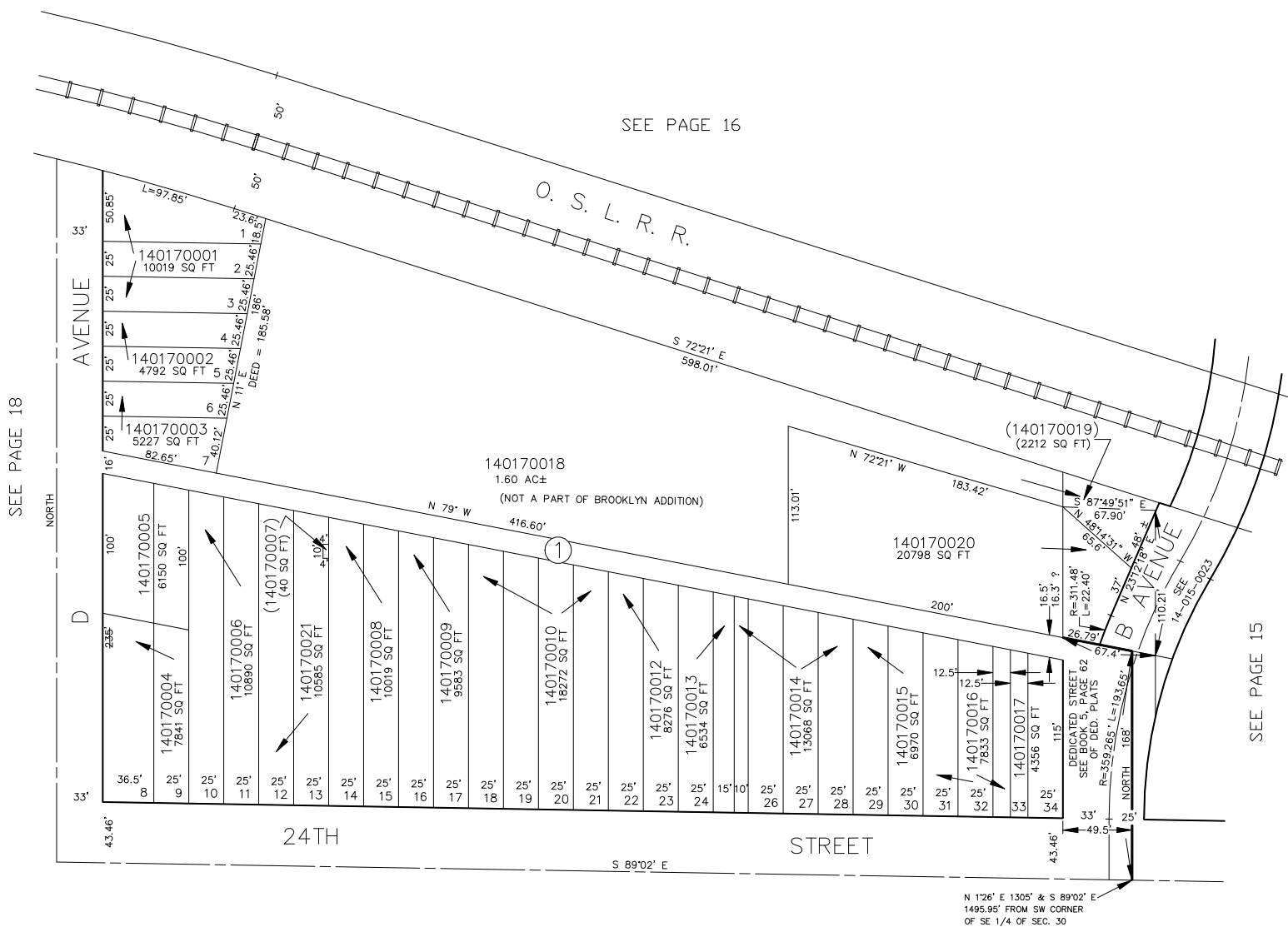
BROOKLYN ADDITION

BLOCK 1

IN OGDEN CITY

SCALE 1" = 50'

TAXING UNIT: 25



DATA FROM OGDEN CITY ENG. DEPT. PLATS

FOR COMPLETE ENG DATA SEE
ORIGINAL DEDICATION PLAT IN
BOOK 5, PAGE 62 OF RECORDS.